



*Change your direction —
and maybe your life*

**TRANSFER TO WESTMONT
2009-2010**

WESTMONT  **NT**

AS YOU THINK ABOUT TRANSFERRING

Does the college you're considering have a strong reputation for academic excellence?

Does the environment encourage your personal as well as academic growth?

Will the college help you explore values and expand dimensions of your Christian faith?

Westmont offers all this and more.

FIVE CHARACTERISTICS lie at the heart of a Westmont education.

1 We value the liberal arts approach to academics with rigor and intensity.

2 We are a community deeply rooted in the non-denominational Christian tradition.

3 A powerful sense of community contributes to personal growth and maturity.

4 We dedicate ourselves exclusively to undergraduate students. Not only will you get all the classes you need, but you will be able to graduate on time.

5 We encourage students to become global Christians and focus on a large and challenging world by participating in our many travel abroad and domestic programs.

Transfer students are welcome to apply to either the fall or spring semester.



TRANSFER REQUIREMENTS

Students may transfer to Westmont no matter how many units they have taken at other institutions.

Applicants with *more than 24 semester units* of completed, transferable college credit after high school will be evaluated primarily on the basis of their college work.

Those with *fewer than 24 semester units* after high school will be evaluated on the basis of their high school work, standardized test scores and completed college work.

Applicants transferring from an accredited college or university will receive credit for transferable courses in which they achieved a grade of C- or better. Transfer credit from community colleges is limited to 64 semester units or 96 quarter units.

Westmont may restrict credit from a non-accredited institution and may, at the discretion of the registrar, require some validation through course work done at Westmont or by examination.

Once applicants have been accepted and have confirmed their intention of attending Westmont, the student records office will make a thorough evaluation of completed course work as it applies to the general education requirements and the overall graduation requirements. Transfer students may view their evaluation on Web Advisor (see www.westmont.edu/admissions/transfer-students.html for more information.)

CLASSIFICATION

Classification is based on the number of units transferred in:

Freshmen	0-25	Juniors	59-91
Sophomores	26-58	Seniors	92 or more



GENERAL EDUCATION REQUIREMENTS

I. Common Contexts (20 units) *Must be completed at Westmont*

For transfer students, the Common Contexts requirements are prorated at one additional course in each of the two subcategories for each full year of attendance at Westmont until either graduation or the subcategory has been completed.

- A. Biblical and Theological Canons: 12 units
 - 1. Life and Literature of the Old Testament (4)
 - 2. Life and Literature of the New Testament (4)
 - 3. Introduction to Christian Doctrine (4)
- B. Introduction to the Christian Liberal Arts: 8 units
 - 1. Philosophical Reflections on Truth and Value (4)
 - 2. World History in Christian Perspective (4)

II. Common Inquiries: *Courses satisfying each of the eight categories*

- A. Reading Imaginative Literature (4)
- B. Exploring the Physical Sciences (4)
- C. Exploring the Life Sciences (4)
- D. Reasoning Abstractly (4)
- E. Performing & Interpreting the Arts (4)
- F. Thinking Globally (4)
- G. Thinking Historically (4)
- H. Understanding Society (4)

III. Common Skills

- A. Three writing-intensive or speech-intensive courses:
 - 1. Writing for the Liberal Arts
 - 2. Writing/speech within the major
 - 3. Writing/speech outside the major
- B. Quantitative and Analytical Reasoning
- C. Modern/Foreign Languages (4)
- D. Physical Education: four one-unit courses.
 - 1. Each course must represent a different activity unless an advanced course follows a beginning course.
 - 2. Varsity sports may be applied for only one semester and preclude activity courses in the same sport.
 - 3. Transfer students must complete one PEA course for each full year at Westmont, including PEA 032 Fitness for Life.
 - 4. Transfer student PE requirement is met with four transferable PEA courses or eight units completed, maximum of one course per semester.

IV. Competent and Compassionate Action

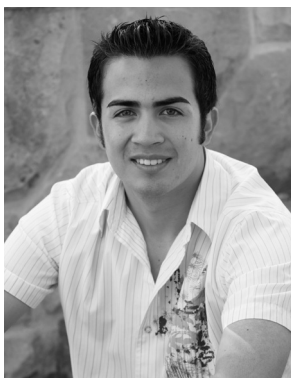
- A. Complete one of the following three options:
1. Productions and Presentations
 2. Research
 3. Integrating the Major Discipline
- B. Complete one of the following two options:
1. Serving Society; Enacting Justice
 2. Communicating Cross-Culturally

Equivalent courses may be taken at other two- or four-year colleges or universities to meet Common Inquiries and Common Skills general education requirements.

For more information, see GE by Area for Westmont courses that meet GE requirements on the Westmont Web site: www.westmont.edu/_academics/pages/registrar/index.html

A TRANSFER TESTIMONIAL

My path to medicine has been different than most, as I didn't know I was passionate about it until two years after high school when I was working and taking classes at a community college. An interesting turn of events led me to volunteer at a free medical clinic for the underserved in my community. My experiences, relationships and



mentors there encouraged me to pursue a career in medicine. I come from a Latino background, and my family is incredibly close. I knew I needed them just as they needed me, and I was afraid to lose the close family network that had supported me and helped me mature. My time at Westmont has been one of incredible growth in all areas of my life, and the Christ-centered family I have found here has broken down the cultural barriers present in my decision to enroll at the college. The professors at Westmont have also helped lessen my reluctance to move away from my parents, who had always been the ones to encourage me to reach higher than I ever thought I could. As a freshman, I met Dr. Niva Tro, and my friendship with this mentor has inspired me to pursue excellence in my academics and in my walk with the Lord.

— Roberto Valladares '08

Transfer student from Moorpark College

HOW TO APPLY

1. **Complete the online application for admission** and submit the \$35 online fee by credit card at www.westmont.edu/admissions/apply.html. Alternately, you may submit a paper application and the \$50 paper application fee with a check or money order payable to Westmont College.
2. Request **official transcripts of all college and high school work**.
3. Transfers who have *completed less than 24 semester units* of solid academic coursework at the time they submit an application must also include **official ACT or SAT I scores**.
4. Submit a **letter of recommendation**. Westmont requires one letter from a professor in an academic course. An optional letter can be a pastoral/character reference.

Note: A personal interview is not required. However, it may enhance your application and give you the opportunity to discuss important matters with an admission counselor.

NOTIFICATION OF ADMISSION

Notifications of admission will be sent beginning April 1 for the fall semester and Dec. 1 for the spring semester. (Limited space for spring — apply early!)

FINANCIAL AID

Eighty-five percent of all Westmont students receive some form of financial aid. Transfer students are eligible to apply for financial assistance. Merit scholarships are also available. Amounts are \$4,000–5,000 and vary based on academic profile. For more information, see the Westmont Web site, www.westmont.edu.

APPLICATION DEADLINES

Spring 2009
Fall 2009

November 1
March 1

DEGREE REQUIREMENTS

Bachelor of arts or science degree:

- A minimum of 124 semester units.
- A minimum Westmont grade point average of 2.0.
- The final year (two full-time semesters) taken at Westmont; or 32 of the last 40 units for the degree taken at Westmont.
- Completion of the General Education requirements.
- A major program. (See the catalog for requirements.)
- One-half of upper division major/minor units completed at Westmont.
- Complete at least 60 units outside the major department, including general education and electives.

A minimum of three to four semesters is required to complete the above degree requirements.

2008-2009 ACADEMIC YEAR COSTS

Tuition and Fees	\$33,170
Room and Board	10,080
Total	43,250

2009-2010 ACADEMIC CALENDAR

2009 Spring Semester

Orientation	Jan. 10-11
Classes Begin	Jan. 12
Final Exams	May 4-7
Commencement	May 9

2009 Fall Semester

Orientation	Aug. 26-29
Classes Begin	Aug. 30
Last Day of Classes	Dec. 10
Final Exams	Dec. 14-17



WESTMONT

Office of Admission

955 La Paz Road

Santa Barbara, CA 93108-1089

Toll free: (800) 777-9011

Phone: (805) 565-6200 • Fax: (805) 565-6234

E-mail: admissions@westmont.edu

www.westmont.edu