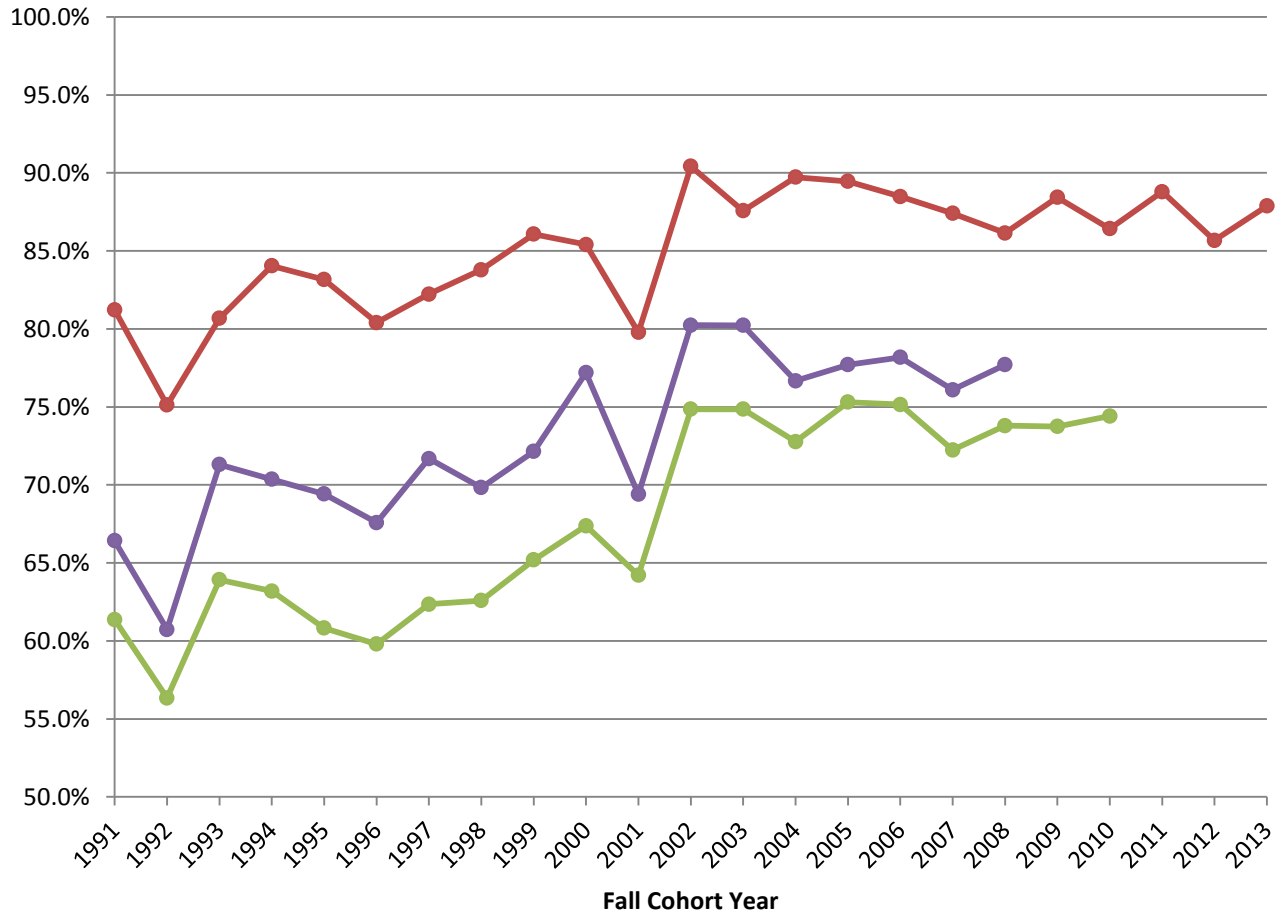


## Retention and Graduation Rates of First-Year Students

Fall Cohort	First Year to Second Year Retention	Four-Year Graduation Rate	Six-Year Graduation Rate
1991	81.2%	61.4%	66.4%
1992	75.1%	56.3%	60.7%
1993	80.7%	63.9%	71.3%
1994	84.0%	63.2%	70.4%
1995	83.2%	60.8%	69.4%
1996	80.4%	59.8%	67.6%
1997	82.2%	62.3%	71.7%
1998	83.8%	62.6%	69.8%
1999	86.1%	65.2%	72.2%
2000	85.4%	67.4%	77.2%
2001	79.8%	64.2%	69.4%
2002	90.4%	74.9%	80.2%
2003	87.6%	74.9%	80.2%
2004	89.7%	72.8%	76.7%
2005	89.5%	75.3%	77.7%
2006	88.5%	75.2%	78.2%
2007	87.4%	72.2%	76.1%
2008	86.1%	73.8%	77.7%
2009	88.4%	73.8%	
2010	86.4%	74.4%	
2011	88.8%		
2012	85.7%		
2013	87.9%		

## Retention and Graduation Rates of First-Year Students



—●— First Year to Second Year Retention    —●— Four-Year Graduation Rate    —●— Six-Year Graduation Rate