

Westmont Downtown | Grotenhuis Nursing Accelerated Bachelor of Science in Nursing



Westmont's Accelerated Bachelor of Science in Nursing (ABSN), operated in partnership with Cottage Health, launched in January 2022. Through the breadth of a liberal arts education and a grounding in the Christian faith, students will grow in all areas of their lives, developing key qualities such as compassion and empathy. Along with technical training in nursing skills, the curriculum addresses significant philosophical, ethical and social issues about individual and population health and compassionate care, equips students with qualitative and quantitative research skills, and provides multiple opportunities for cross-cultural engagement and reflection.

SELECTED COURSES

- Fundamentals of Nursing
- Medical/Surgical/Geriatric Nursing
- Public Health Nursing
- Nursing Leadership
- Nursing Research and Informatics
- Professional Nursing Roles
- Pathophysiology
- Understanding My Neighbor: Society, Culture, and Health
- Nursing for Human Flourishing
- Nursing and the Liberal Arts
- Obstetrics
- Pediatrics
- Psychiatric/Mental Health

CAREER PATHS

- Intensive Care
- Emergency Department and Trauma Services
- Surgical Service
- Acute Patient Care
- Ambulatory Patient Care
- Home Patient Care
- Public Health Nursing
- Case Management
- Discharge Planning
- Nursing Education
- Nursing Informatics
- Nursing Leadership
- Nursing Research



WESTMONT DOWNTOWN
GROTENHUIS NURSING

FACULTY HIGHLIGHTS



DIANTHE HOFFMAN, DNP,
MPA, MSN, PHN, RN

Program Director
Associate Professor



JESSICA BARBOSA, BSN,
CCRN, RN

Nursing Faculty



LESLEY GARDIA, MSN, RN,
CCRN

Assistant Program Director
Assistant Professor



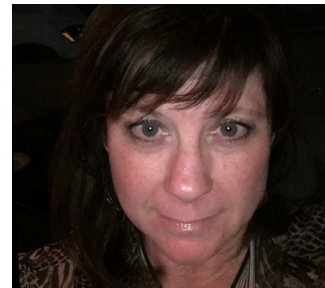
NATHALIE CONFIAC, PH.D,
MSN, PHN

Associate Professor



MARYBETH GOMEZ, MSN, RN

Nursing Faculty



CINDY HOWE, MSN, RN

Nursing Faculty

POISED TO SERVE IN THE HEART OF SANTA BARBARA



The Westmont Downtown building, which the college has purchased, houses the program on the specially renovated first and second floors. The facility features a state-of-the-art simulation lab, a team-based learning environment and progressive healthcare facilities to support a vibrant nursing program. The convenient location at 26 W. Anapamu Street provides students with easy access to their clinical rotations throughout the Santa Barbara area.

AN ACCELERATED PROGRAM

The 16-month ABSN program admits applicants with a baccalaureate degree who complete an intense education and clinical training that prepares them to become a registered nurse. Every year, the college admits two cohorts, each with 24 nursing students.

Students get involved in the community at facilities such as Cottage Hospital, Sansum Clinic, Santa Barbara Public Health, Goleta Unified School District, Casa Dorinda and Covenant Living at the Samarkand.



WESTMONT DOWNTOWN
GROTENHUIS NURSING

westmont.edu/nursing